

LEVEL 5[®]

TOOL CONTROL SYSTEM



VISIBILITY



ORGANIZATION



ACCESS CONTROL



AUTOMATION



ASSET MANAGEMENT

snaponlevel5.com



LEVEL 5[®]

TOOL CONTROL SYSTEM



ORGANIZATION



VISIBILITY



ACCESS
CONTROL



ASSET
MANAGEMENT



AUTOMATION

The more organized you are, the easier it is to get the job done right. Starting with a complete tool audit conducted by a Snap-on[®] Solutioneer, we'll help you determine the level of tool control you may need and design a specialized tool set with your specific applications in mind.



Tool Storage

Selected and organized for your crew's distinct need for speed.

Proper organization allows your team to find what they are looking for, while keeping tools safe. Snap-on can provide a complete tool audit to help you determine the best tool storage product to meet your needs. We even offer mobile solutions – allowing you to take your tools where you need them.

CUSTOMER BENEFIT

- Standardize Work
- Improve Productivity
- Control Inventory
- Reduce Losses

PRODUCTS AND SERVICES

- Configurable Tool Storage
- Mobile Boxes
- Value Add: Kitting

CUSTOM KITTING SOLUTIONS

From one-of-a-kind kits to thousands of identical tool sets, no one does tool kitting like Snap-on.

No matter how big or small the application, Snap-on's robust, flexible and scalable capabilities enable us to create a versatile range of kitting solutions – from stationary, mobile and transportable sets and much more. We supply kits for everything from servicing copy machines, to maintaining and repairing tanks, helicopters, oil rigs and jumbo jets. Standard or custom, large or small – from our state of the art kitting center, Snap-on does it all.

Custom Kitting



FEATURES AND BENEFITS

Organization

Tons of options for organizing tools: bags, shadow boards, foam inserts for portable cases, custom foam layouts for tool box drawers, and more. When you're highly organized, you're highly productive.

Tool Management

Whether you require simple visual management, or a program to meet FOD and FME requirements, we can tailor a management program for virtually any need.

Sourcing and Integration

Need a tool that requires additional sourcing beyond our standard offerings? No problem. We can do the sourcing for you, and integrate the components into your kit.

Tool Identification

At Snap-on, we have in-house laser tool engraving capabilities to match your identification system – whether you're looking for etching for a specific kit, or serially marked tools.

On-site Tool Management

Sometimes you need someone to actually go on-site, check inventories, manage updates, and handle replacements. Snap-on is ready to assist you with all your tool needs.

LEVEL 5[®]

TOOL CONTROL SYSTEM


ORGANIZATION


VISIBILITY


ACCESS
CONTROL


ASSET
MANAGEMENT


AUTOMATION

Having a clear view of the tools you use enhances productivity in your workplace. Making tools easier to see reduces tool selection time and increases accountability for their return.

When your crew sees the tools they need, you'll see output improve.



Cage Storage



Double VCC

CUSTOMER BENEFIT

- Standardize Work
- Improve Productivity
- Control Inventory
- Reduce Losses

PRODUCTS AND SERVICES

- Visual Control Cabinet (VCC)
- Double VCC
- Zippered Window Cases
- Cage Storage
- Colored Tools



Zippered Window Cases



Colored Tools

VISUAL CONTROL CABINETS



The Snap-on® Visual Control Cabinet (VCC) gives you a full view of your tools for instant accountability and inventory management. Available in 2 sizes, these cabinets can hold an extensive number of tools securely with keyed or keyless entry. Customization is available through the optional interior tool control functions such as foam inserts or peg boards. With an optional rolling cart or rolling cab, you can position the visual control cabinet close to the work so your technicians always have the right tools at the ready.

Product Specifications

- Available in 34" or 49" sizes
- Optional accessories available



Visual Control Cabinet (VCC)

FEATURES AND BENEFITS

Performance

Visually manage tools at the “point of use”. Available in 34" and 49" sizes for a tool capacity of 70 to 100 tools. VCC keeps tools chest high – within the “strike zone” – reducing the need to bend and stretch for tools. Full swing door hinge creates unobstructed entry while gas shocks keep the window in the upright position. Conveniently positioned at 45-degree angle for easy access and visibility.

Security

Features a Makrolon® AP Polycarbonate window – the same material used in jet fighter cockpits – for “at a glance” tool management and tool security. Available with standard key locks or eLock keyless entry for maximum security without the need to distribute keys. eLock is programmable for up to 3,000 users and can be networked with LockView software.

Versatility

Includes v-stand brackets, allowing it to be mounted to a wall, to an optional 49" rolling cart, or to any 24" deep or larger roll cab. Interior tool control options include metal peg board or customized foam layouts. Optional drawer and side panels for expanded storage.

LEVEL 5[®]

TOOL CONTROL SYSTEM



ORGANIZATION



VISIBILITY



ACCESS
CONTROL



ASSET
MANAGEMENT



AUTOMATION

Effective tool control requires that your teams have access to just the tools they need, when and where they need them. Proprietary software manages access at the individual user level, allowing either stand-alone or networked control.

KEEP YOUR TOOLS SECURE, ORGANIZED AND IN THE HANDS OF THE TECHNICIANS THAT NEED THEM.



Snap-on helps you control lost tool downtime and replacement costs with access control systems. In critical industries and applications, tool control is an essential step toward eliminating FOD (Foreign Object Damage in aviation) and implementing FME (Foreign Material Exclusion in the power industry). Unlocked and open access tool boxes can result in FOD/FME problems. Snap-on puts you in control.



CUSTOMER BENEFIT

- Standardize Work
- Improve Productivity
- Control Inventory
- Reduce Losses
- Control FOD
- Improve Security
- Audit Trail
- Improve Accountability
- Oversight Prevention

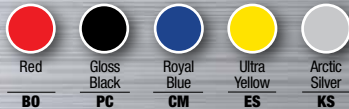
ALPHA BOX™

Alpha Box™ is a proven tool control solution that delivers access control with upgrade potential. Each box features keyless entry with employee badges for convenience, safety and security. The CAD-developed tool control foam in each drawer provides superior organization and secure tool control management.

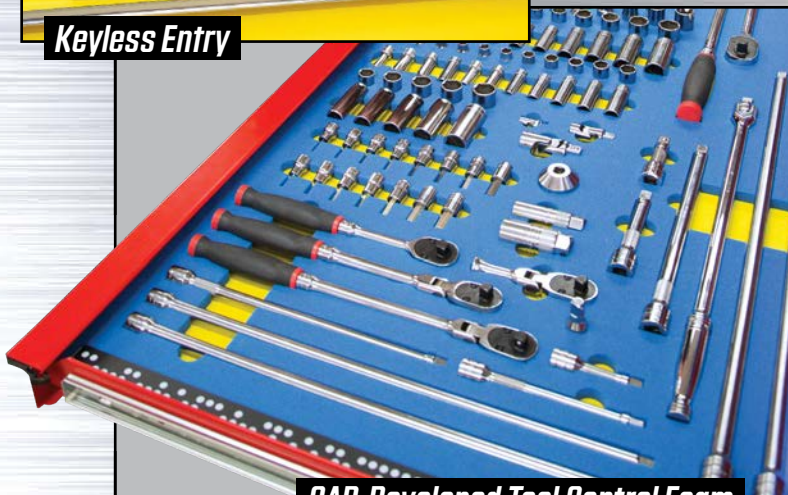
Product Specifications

- 8 full-length drawers
- Available in 36" or 54" sizes
- Available in 5 colors

Colors Available



Keyless Entry



CAD-Developed Tool Control Foam

FEATURES AND BENEFITS

Upgradeable

Alpha Box™ can be upgraded to Automated Tool Control capability (see page 10) by purchasing an ATC top and administrative software. Wi-Fi capable and networkable with optional LockView® software and Wi-Fi module.

Security

Level 5™ keyless entry system allows for entry with a badge or via keypad with at-the-box programming for up to 3,000 users.

Organization

CAD-developed tool control foam provides organization and visibility.

Durability

Durable, stainless steel top provides an excellent work surface for any industry.



LEVEL 5[®]

TOOL CONTROL SYSTEM



ORGANIZATION



VISIBILITY



ACCESS CONTROL



ASSET MANAGEMENT



AUTOMATION

Take asset management to a whole new level of speed, control, accuracy and cost-effectiveness. With True-Crib and True-Site software, **tool control is smarter than ever.**

KEEP TRACK OF YOUR CREW'S TOOLS AND WHERE THEY USE THEM, WITHOUT LOSING TRACK OF TIME.

CUSTOMER BENEFIT

- Standardize Work
- Improve Productivity
- Control Inventory
- Reduce Losses
- Control FOD
- Improve Security
- Audit Trail
- Improve Accountability
- Oversight Prevention

PRODUCTS AND SERVICES

- True-Crib™ Software
- True-Site™ Network Software
- Value Add: Calibration & Product ID

TRUE-CRIB™

Snap-on's True-Crib™ software system takes asset management to a whole new level of speed, control, accuracy and cost-effectiveness. Simple, intuitive and easy to operate, it provides comprehensive analysis, reporting and inventory tracking.

- Talking software eliminates the need to repeatedly look at the computer screen between barcode scans
- Fastest, most accurate way to check tools in and out
- Asset management and tracking
- Provides audible and visual verification of items and function
- Easy to use, smart and secure
- Summarizes activities on exit
- Compiles comprehensive reports
- Multiple or single crib support
- Interface with customers applications
- Software support and updates

TOOL MANAGEMENT ACCESSORIES



Scanning Equipment



Signature Pads

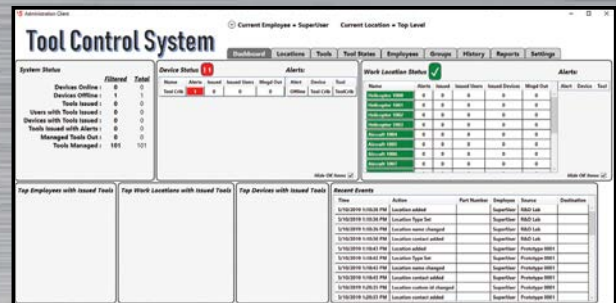


Printers

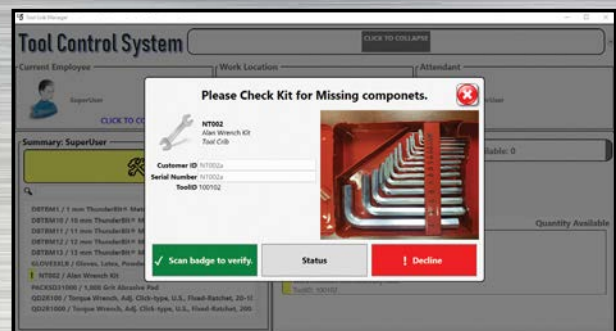
TRUE-SITE™

Software to network all of your asset-managed tool sites together

- Control for all tools**
 - Automatic Tool Control using ATC toolboxes and ATC cabinets
 - Manual tool control using True-Crib™
- Flexible organization structure**
 - True-Site™ system architecture can be customized to match customer's organization
- Customizable tool control policies**
 - Create your own maintenance checks, tool status, user permissions and more
- Easy to understand status displays**
 - Color coded for quick status summary
 - Organized by users, work locations and/or tool control stations
- Customization / built-in reports**
 - Multiple report types (inventory, maintenance, tool usage, etc.)
 - Multiple output formats (PDF, spreadsheet, text)
 - Create, save and share custom report filtering
- Tool kit management**
 - Manage multiple tools simultaneously by adding them to a tool kit
 - Kit template defines tool load for multiple kits of the same type
- Integrated data analysis tools**
 - "Forensics Mode" can compile and display a complete event history of a single tool
 - Process tool usage based on part number and location
- Mobile status monitoring and notifications**
 - Mobile apps provides both top level and detailed status summary
 - Email and text messaging for designated tool alerts
 - Email delivery of monthly, weekly and daily scheduled reports
- Tool maintenance tracking**
 - Track tool location and status as it progresses through maintenance processes
- Integration with customer systems**
 - Web API provides access to True-Site data and control



Top Level Dashboard shows status of Device, Location, Tool, Employee and more



User Level Tool Status Alerts



LEVEL 5[®]

TOOL CONTROL SYSTEM



ORGANIZATION



VISIBILITY



ACCESS
CONTROL



ASSET
MANAGEMENT



AUTOMATION

When critical industry processes and concerns require the elimination of FOD and FME problems, the solution is to **minimize human error**. Let your Snap-on[®] ATC handle the control and tracking automatically.

TAKE ERROR OUT OF THE EQUATION. MULTIPLY YOUR PRODUCTIVITY AND MINIMIZE ERROR AUTOMATICALLY.

CUSTOMER BENEFIT

- Standardize Work
- Improve Productivity
- Control Inventory
- Reduce Losses
- Control FOD
- Improve Security
- Audit Trail
- Increase Accountability
- Oversight Prevention
- Calibration and Maintenance Reminders

PRODUCTS AND SERVICES

- Automated Tool Control Box
- Automated Tool Control Locker
- Value Add: Networking

AUTOMATED TOOL CONTROL

With advanced digital imaging technology and proprietary software, Level 5 Automated Tool Control System[®] (ATC) scans the tool drawer and records which tools are removed and replaced in real time. You know where everything is at all times without your techs being slowed down for a second. The system also knows when tools are broken, allowing you to replace or repair them right away. It's tool control that works hard to keep your techs working at their best.



ATC BOX

- No individual scanning required
- No RFID tags to install
- No limitations on tool size – if it fits in the drawer, it works
- Optional polyurea elastomer coated top vs. stainless steel

Works with
TRUE-SITE[™]
See page 9

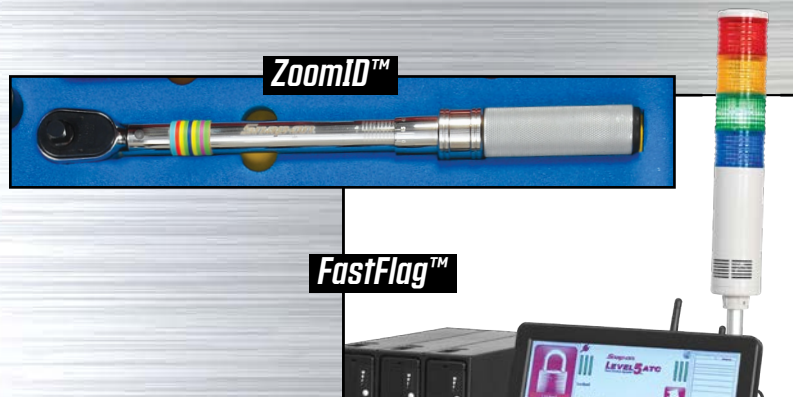


ATC LOCKER

- Track irregularly shaped items like extension cords, tools kitted in plastic or fabric carrying cases, personal protective equipment and more
- Track serialized items like torque wrenches, multimeters or micrometers
- Fully networkable – connects to Level 5™ administrative interface
- Recharge while storing power tools

All the Accessories you need

- FastFlag™ adds status display lights
- ZoomID™ gives you the ability to track serialized, certified and calibrated assets in the ATC Box



FEATURES AND BENEFITS

Convenience

- Intuitive touchscreen interface
- Audible voice confirmation of tool removal and replacement
- Automatic locking
- Errors announced and displayed for incorrect tool position
- 10.1" widescreen, 16:9 LED, resistive touchscreen
- Dual wireless antennas for improved connectivity
- Hardware – 64-bit processor with 8 GB RAM

Powerful Administrative Software with Real Time Reporting

- Comprehensive analysis, reporting, and inventory tracking can be performed from administrator workstations located anywhere on the network in real time
- Reports are fully customizable and exportable to Excel or PDF
- Registers transactions in real time – both at the box and between the box and the admin client
- Real time communication includes email alerts when tools are used, when calibration is required, when tool status changes and lost or broken events

State-of-the-Art Battery Power

- 16+ hours of battery run-time; 30 minutes of backup power for uninterrupted power supply
- Snap-on® rechargeable batteries feature state-of-the-art circuit protection that prevents overload.

Specifications

- 1 year electronics warranty
- Extended warranty available
- Unlimited number of assigned users
- Networking through Ethernet or wireless
- 1 copy of ATC software required for each administrator

Snap-on®

LEVEL 5[®]

TOOL CONTROL SYSTEM



TOOL CONTROL THAT PUTS YOU IN COMMAND

For technicians, lost tools can kill a productive workday with wasted time. That's why Snap-on has kept technicians organized and productive since 1920. Now, over 100 years later, Snap-on offers the most advanced form of tool control in the industry: Level 5 Tool Control System[®]. From seamlessly integrated access control to fully automated systems that automatically monitor who has which tools and where they're working, the Level 5 Tool Control System[®] improves every aspect of tool management. And it works with your crew, at the speed of work, to decrease downtime and improve productivity. That way everyone can concentrate on what matters most – the job at hand.

Snap-on[®]

Snap-on is a trademark of Snap-on Incorporated. © Snap-on Incorporated 2020.
All other marks are trademarks of their respective holders. Snap-on Industrial, 2801 80th Street, Kenosha WI 53143

6/2020 – 0000195532



snaponlevel5.com